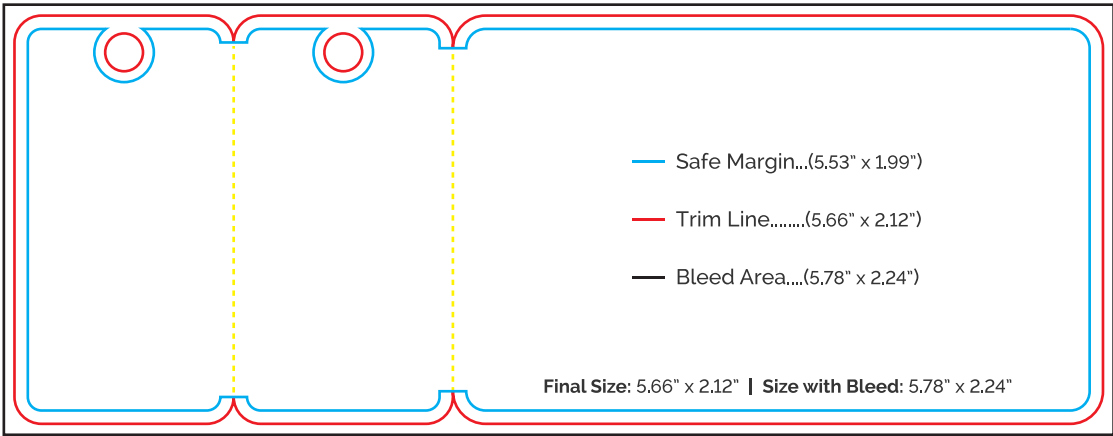
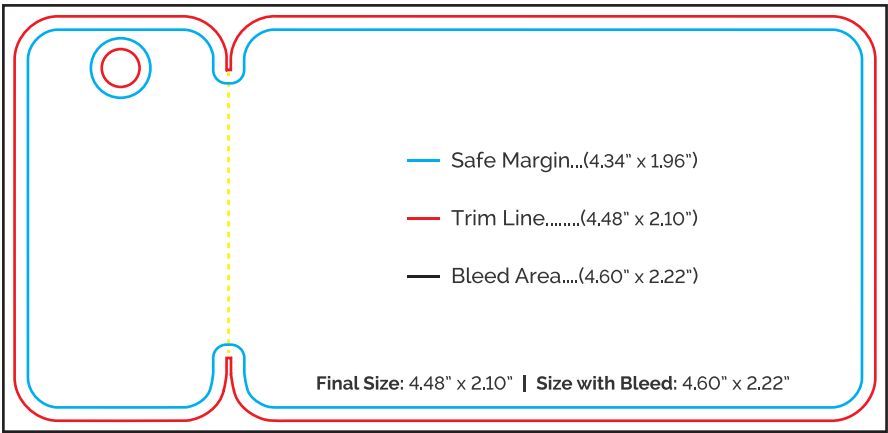


# PLASTIC COMBO CARD GUIDELINES

## ACCEPTED FILE FORMATS

Adobe Illustrator (Ai) | Adobe PDF (PDF) | Corel Draw (CDR) | Encapsulated PostScript (EPS)  
Adobe Photoshop (PSD) | JPEG Image (JPG) | PNG Image (PNG) | GIF Image (GIF) | Bitmap Image (BMP)

## SETTING UP YOUR ARTWORK



### — Safe Margin

- All critical elements (text, images, graphics, logos, etc.) must be kept inside this blue line to avoid trimming.

### — Trim Line

- This is the actual cut of the final design. Any images and text beyond this line will be trimmed.
- We do not recommend having borders due to shifting in the cutting process, which may cause borders to appear uneven.

### — Bleed Area

- Design all artwork to the edge of the black outline (we require 1/8" bleeds).



### Design in CMYK

- All designs should be provided in CMYK format. In the case that RGB files are provided, please note that colors may shift during manufacturing.



### Outlining/Rasterizing Fonts and Strokes

- Outline/Rasterize all live fonts and strokes before saving. This ensures your artwork translates as designed during the manufacturing process.



### Check your Resolution

- All designs should be created with at least 300 DPI to ensure the highest quality print during the manufacturing process.